



MONTHLY MEMBERSHIP PROGRESS REPORT

District 15

Results as of: 06/30/2018

GMT: WILLIAM PHILLIPI

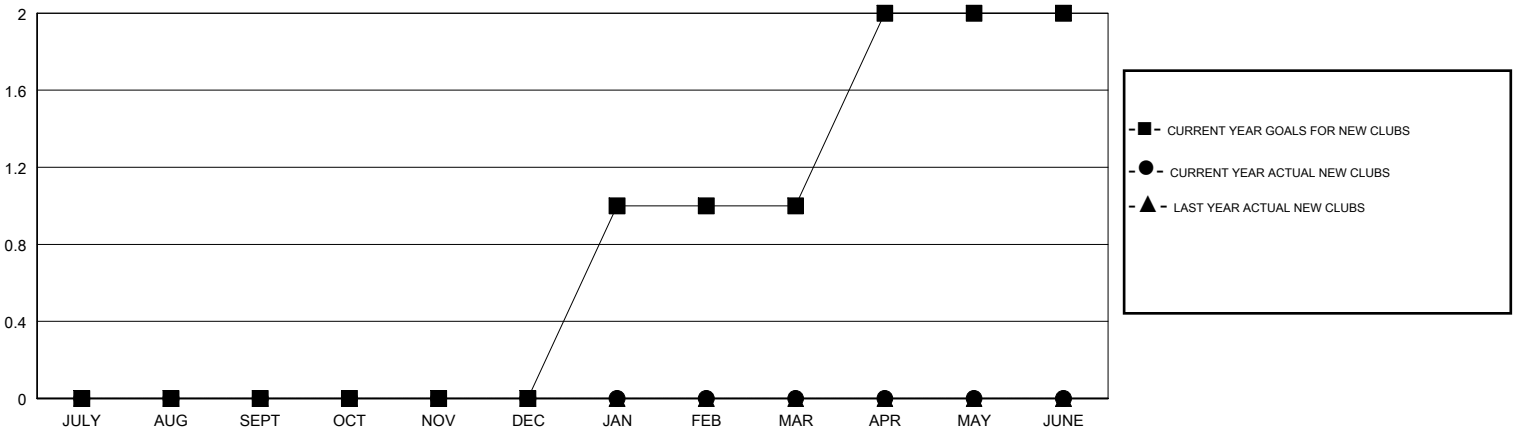
LOCATION WYOMING

GMT CA

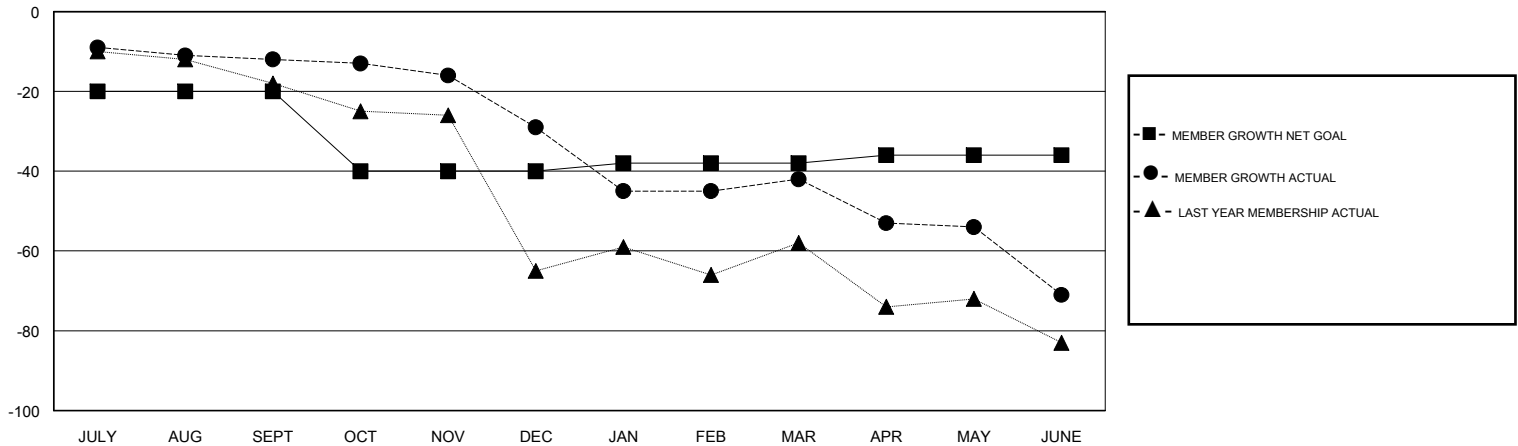
Clubs			
RESULTS FOR 2017-2018			
QUARTER	NEW CLUB GOAL	NEW CLUBS	DROPPED CLUBS
JULY/AUG/SEPT	0	0	0
OCT/NOV/DEC	0	0	0
JAN/FEB/MAR	1	0	0
APR/MAY/JUNE	1	0	1

Members			
RESULTS FOR 2017-2018			
QUARTER	MEMBER GROWTH NET GOAL	MEMBER GROWTH ACTUAL	DROPPED MEMBERS ACTUAL (including transfers)
JULY/AUG/SEPT	-20	14	26
OCT/NOV/DEC	-20	14	28
JAN/FEB/MAR	2	22	35
APR/MAY/JUNE	2	18	46

GOALS AND ACTUAL NEW CLUBS CUMULATIVE



GOALS AND ACTUAL MEMBERS CUMULATIVE



DROPPED CLUBS: 1	27 CLUBS OF 44 ADDED 1 OR MORE NEW MEMBERS	<u>GENDER DISTRIBUTION</u> MALE 846 (80.96%) FEMALE 199 (19.04%) Women Percentage Fiscal Year Goal: 25%
<u>DROPPED MEMBERS</u> DECEASED 20 CLUB CANCELLED 2 OTHER 113 TOTAL 135	CLICK HERE FOR CUMULATIVE MEMBERSHIP DATA	TOTAL FAMILY UNIT MEMBERS 0 FAMILY MEMBERS PAYING HALF DUES 0